



# Blinn College District Monthly Financial Report



For period ended March 31, 2023

Blinn College District  
Table of Contents

	Page
<i>EXECUTIVE SUMMARY</i> .....	1
<i>FINANCIAL SECTION</i> .....	3
Operating Statements	
Statement of Budgeted Revenues and Expenditures.....	4
Statement of Operating Revenues.....	5
Statement of Expenditures by Function.....	6
Statement of Expenditures by Category.....	7
Statement of Net Position.....	8
Statement of Net Position Supplementary Information.....	9
Investment Report by Fund.....	10
<i>SUPPLEMENTARY SCHEDULES AND GRAPHS</i> .....	11
Schedules	
Certificate of Deposit Investment Detail.....	12
Analysis of Replacements and Renovations and Capital Projects.....	13
Blinn College Foundation Scholarships and Endowments.....	14
Blinn College District Check Register Issued Over \$10,000.....	18
Graphs	
Operating Revenue.....	19
Operating Expenditures.....	20
Actual Expense by Category.....	21
Cash and Investments.....	22

**Blinn College District  
Executive Summary  
As of March 31, 2023**

**General**

**Tuition & Fees**

Deferred tuition, fees, auxiliary fees, food service, housing, and parking revenue are recognized prorata over the term based on the number of months within the term.

**State Appropriations**

The FY 2023 State appropriations for formula funding and group insurance are recognized one-twelfth each month over the fiscal year, as revenues in the accompanying financial statements. Cash payments from the state are only received in 10 of the months each year, with no payments being received in January or February. State appropriations specific to employee benefits are recognized each month as the cost is incurred.

**Waivers & Exemptions**

At 03/31/2023, Waivers & Exemptions issued to students for FY 2023 totaled \$3.0 million versus \$2.5 million for FY 2022. The Hazelwood exemption comprises 34% of the total Waivers & Exemptions, followed by the Bryan Early Collegiate High School at 22%, Child Protective Services waiver at 14%, Technical Concurrent & Concurrent Enrolled at 7%, Dependent when Vet is Disabled at 10% and Other at 13%.

**Net Increase (Decrease) in Educational and Auxiliary Funds**

The current year increase in Educational and Auxiliary funds of \$12.7 million is \$11.3 million less than the prior year increase of \$23.9 million.

**Unrestricted Cash Position & Transactions**

Unrestricted Cash and Cash Equivalents were \$124.8 million and \$134.6 million at 03/31/2023 and 03/31/2022, respectively.

**Statement of Operating Revenues**

**Tuition and Fees**

Current year net tuition and fees of \$51.7 million is \$3.1 million higher than prior year of \$48.6 million, representing an increase of 6%. The increase is primarily due to increases in Out-of-District tuition of \$1.3 million; Non-Resident tuition of \$818 thousand; General Use Fee of \$1.2 million; Lab and Course Fees of \$295 thousand; Workforce fees of \$260 thousand; and increases in waivers and exemptions of (\$472 thousand).

**Auxiliary Enterprises**

Current year Auxiliary Enterprises of \$8.4 million is \$894 thousand higher than prior year of \$7.5 million, representing an increase of 12%. The increase is primarily due to an increase in Food Service of \$629 thousand; increase in Bookstore of \$237 thousand; and, an increase in parking of \$83 thousand.

**Interest Revenue**

Current year Interest Revenue of \$1.9 million is \$1.5 million higher than prior year of \$325 thousand, representing an increase of 470%. The increase is due to rising interest rates on investments.

**Miscellaneous Revenue**

Miscellaneous Revenue is \$712 thousand and \$14.1 million at 03/31/2023 and 03/31/2022, respectively, representing a decrease of \$13.4 million. This change is due to a decrease of \$13.3 million in HEERF revenue. All HEERF funds were expended during FY2022.

**Statement of Expenditures by Function**

**Operation and Maintenance of Plant**

Operation and Maintenance of Plant expenditures were \$7.4 million and \$6.5 million at 03/31/2023 and 03/31/2022, respectively, representing an increase of \$941 thousand, or 14%. This expense is primarily due to increases in building maintenance of \$299 thousand and campus security of \$241 thousand.

**Athletics**

Athletics expenditures were \$2.1 million and \$1.8 million at 03/31/2023 and 03/31/2022, respectively, representing an increase of \$326 thousand, or 18%. This increase is primarily due to net increases in salaries of \$251 thousand; increases in student travel of \$36 thousand; and increases in contract labor of \$41 thousand.

**Statement of Expenditures by Category**

**Salaries and Wages**

Staff salaries increased by \$1.8 million, or 13%. This increase is due to the hiring of vacant staff positions and the 5% salary increases effective 9/1/2022.

**Travel**

Travel increased by \$332 thousand, or 47%. This increase is due to cancellation of travel restrictions related to COVID during FY22.

**Utilities and Telephone**

Utilities and telephone increased by \$211 thousand, or 11%. This increase is due to the timing of payments for utility invoices.

**Furniture, Equipment and Property**

Furniture, equipment and property increased by \$363 thousand, or 341% due to the purchase of budgeted computer equipment.

## Statement of Net Position

### Assets

#### Cash in Investment Pools

Cash in Investment Pools decreased \$28.3 million as compared to the prior year. The decrease in Cash is directly related to the recent purchases of \$15.3 million in certificates of deposit and \$3.4 million in US Treasury Notes along with a decrease in HEERF revenue reimbursement in the prior year.

#### Scholarship Fund Investments

Scholarship Fund Investments increased \$635 thousand as compared to the prior year which is reflective of the increase in College Scholarship funds.

#### Auxiliary Project Reserve Fund Investments

Auxiliary Project Reserve Fund Investments decreased \$672 thousand as compared to the prior year. This decrease is due to the expenditure of funds for Mill Creek upgrades to accommodate eSports.

#### Construction Funds

Construction and Restricted Fund Investments decreased \$3.5 million. This decrease is due to the 2020 bond proceeds being fully expended on construction of the Brenham STEI building during FY2022.

#### Certificate of Deposit and US Treasury

Certificate of Deposit and Treasury increased by \$18.5 million. The College purchased additional CDs: \$10 million through Multi-Bank Securities and \$5 million through Bank of Brenham and \$3.4 million of US Treasury Note.

#### Other Assets

Other assets increased \$344 thousand as compared to the prior year. This increase is due to the timing of recording prepaid expenses. Prepaid expenses are now being recorded monthly rather than annually as was done in prior years.

#### Capital Assets

Net Capital Assets are valued at \$229.4 million, an increase of \$29.4 million from prior year. The increase is directly related to the Brenham Science, Technology, Engineering, and Innovation Building, completion of the RELIS Administration Building, and the implementation of GASB 87 requiring certain leases reported as capital assets.

#### Deferred Outflows

Deferred outflows decreased by \$5.9 million due to adjustments in GASB 68 and GASB 75 related to pensions.

### Liabilities

#### Accounts Payable

Accounts Payable increased \$518 thousand from prior year.

#### Agency Funds

Agency funds increased \$221 thousand from prior year. This is due to more activity within the student groups as compared to the prior year. COVID restrictions were still in place for most of FY2022.

#### Lease Liability

Lease Liability increased \$10.6 million from prior year. Reporting lease liability is a requirement of GASB 87 which was implemented at the end of FY2022.

#### Net Pension Liability

Net Pension Liability Related to Pensions (GASB 68) decreased \$11.8 million as compared to the prior year.

#### Deferred Inflows

Deferred Inflows increased by \$3.4 million due to adjustments in GASB 68 and GASB 75 related to pensions.

### Net Assets

#### Leases

Leases increased \$13.1 million from prior year. Reporting lease assets is a requirement of GASB 87 which was implemented at the end of FY2022.

#### Student Aid

Student Aid decreased \$608 thousand from the prior year.

#### Net Assets

Unrestricted net assets decreased by \$4.7 million from prior year.

## FINANCIAL SECTION

**BLINN COLLEGE DISTRICT**  
**Statement of Budgeted Revenues and Expenditures**  
**Month Ended March 31, 2023 and 2022**  
**(58% Of Fiscal Year)**

	Current Fiscal Year 2023			Prior FY	Monthly Variance	
		Actual	% Actual	Actual	FY23 vs FY22	
	Budget	03/31/23	To Budget	03/31/22	Dollars	Percent
<b>Operating Revenue</b>						
State Appropriations	\$ 25,353,968	\$ 14,789,815	58%	\$ 14,789,815	\$ -	0%
State Insurance and Retirement	5,931,902	3,584,900	60%	3,475,892	109,008	3%
Tuition & Fees (Net of Allowances)	73,473,183	51,662,166	70%	48,552,305	3,109,861	6%
Auxiliary Sales (Net of Allowances)	12,909,576	8,443,907	65%	7,549,917	893,990	12%
Property Taxes	2,278,968	2,216,634	97%	2,237,240	(20,606)	-1%
Interest	500,000	1,853,199	371%	324,855	1,528,344	470%
HEERF Funding	-	-	-	13,289,334	(13,289,334)	-100%
Miscellaneous Revenue	852,241	712,348	84%	813,443	(101,095)	-12%
<b>Total Operating Revenue</b>	<b>121,299,838</b>	<b>83,262,969</b>	<b>69%</b>	<b>91,032,801</b>	<b>(7,769,832)</b>	<b>-9%</b>
<b>Operating Expenditures</b>						
General Academic & Vocational Instruction	44,923,704	28,603,213	64%	26,866,681	1,736,532	6%
Public Service	265,000	72,190	27%	73,193	(1,003)	-1%
Star of Republic Museum	-	-	-	3,896	(3,896)	-100%
Academic Support	10,655,012	5,405,726	51%	5,058,037	347,689	7%
Library Services	1,892,817	1,104,383	58%	1,074,641	29,742	3%
Student Services	8,522,804	3,904,352	46%	3,997,647	(93,295)	-2%
Institutional Support	19,999,747	10,007,539	50%	9,303,523	704,016	8%
Operation and Maintenance of Plant	13,858,122	7,445,883	54%	6,504,686	941,197	14%
Auxiliary Enterprises	12,439,513	7,130,795	57%	6,480,767	650,028	10%
<b>Total Operating Expenditures</b>	<b>112,556,719</b>	<b>63,674,081</b>	<b>57%</b>	<b>59,363,071</b>	<b>4,311,010</b>	<b>7%</b>
<b>Non-Operating Expenditures</b>						
Replacement and Renovations	-	-	-	909,237	(909,237)	-100%
Capital Projects - Budgeted	-	-	-	-	-	-
Contingency	-	-	-	-	-	-
Debt Service	8,743,119	6,933,559	79%	6,822,434	111,125	2%
<b>Total Non-Operating Expenditures</b>	<b>8,743,119</b>	<b>6,933,559</b>	<b>79%</b>	<b>7,731,671</b>	<b>(798,112)</b>	<b>-10%</b>
<b>Total Expenditures</b>	<b>121,299,838</b>	<b>70,607,640</b>	<b>58%</b>	<b>67,094,742</b>	<b>3,512,898</b>	<b>5%</b>
<b>Net Increase (Decrease) in Educational and Auxiliary Funds</b>	<b>\$ -</b>	<b>\$ 12,655,329</b>	<b>100%</b>	<b>\$ 23,938,059</b>	<b>\$ (11,282,730)</b>	<b>-47%</b>
<b>Non-Budgeted Capital Projects</b>						
Capital Projects - Bond Funds						
2019 Bond Project - STEI Building		\$ -		\$ 1,722,831		
2020 Bond Project - RELDIS II		-		9,255,900		
		<u>\$ -</u>		<u>\$ 10,978,731</u>		
Capital Projects - Capital Reserves						
Brenham Campus Projects		\$ 1,912,272		\$ 2,122,120		
Bryan Campus Projects		268,523		130,960		
RELDIS Campus Projects		1,453,750		2,383,417		
		<u>\$ 3,634,545</u>		<u>\$ 4,636,497</u>		
Property Purchases						
Brenham Campus Property Purchase		\$ 799,984		\$ -		
Bryan Campus Property Purchase		-		-		
		<u>\$ 799,984</u>		<u>\$ -</u>		
R&R - Capital Reserves		<u>\$ 1,717,718</u>		<u>\$ -</u>		
<b>2021 Ice Storm</b>						
Insurance Proceeds		\$ 6,746,826		\$ 5,850,229		
Disaster Repairs						
Brenham Campus		6,068,381		5,085,623		
Bryan Campus		395,741		361,741		
RELDIS Campus		4,883		4,883		
Schulenburg Campus		428		428		
Insurance Less Expenditures		<u>\$ 277,393</u>		<u>\$ 397,554</u>		
<b>2021 Hail Storm</b>						
Insurance Proceeds		\$ 129,451		\$ 78,602		
Disaster Repairs						
Bryan Campus		83,527		83,527		
Insurance Less Expenditures		<u>\$ 45,924</u>		<u>\$ (4,925)</u>		
<b>2022 Winter Storm</b>						
Insurance Proceeds		\$ 375,820				
Disaster Repairs						
Brenham Campus		210,515				
Insurance Less Expenditures		<u>\$ 165,305</u>				

**BLINN COLLEGE DISTRICT**  
**Statement of Operating Revenues**  
**Month Ended March 31, 2023 and 2022**  
**(58% Of Fiscal Year)**

	Current Fiscal Year 2023			Prior FY Actual 03/31/22	Monthly Variance FY23 vs FY22	
	Budget	Actual 03/31/23	% Actual To Budget		Dollars	Percent
<b>Revenues</b>						
State Appropriations						
Contact Hour Funding	\$ 19,225,425	\$ 11,214,831	58%	\$ 11,214,831	\$ -	0%
Student Success	5,448,137	3,178,080	58%	3,178,080	-	0%
Core Operations	680,406	396,904	58%	396,904	-	0%
Total Appropriations	25,353,968	14,789,815	58%	14,789,815	-	0%
State Group Insurance	4,183,097	2,440,140	58%	2,440,137	3	0%
State Retirement						
Teachers Retirement System (TRS)	1,406,600	939,406	67%	839,833	99,573	12%
Optional Retirement Program (ORP)	342,205	205,354	60%	195,922	9,432	5%
Total State Group Insurance and Retirement	5,931,902	3,584,900	60%	3,475,892	109,008	3%
Total State Funding	31,285,870	18,374,715	59%	18,265,707	109,008	1%
Tuition						
In-District	439,217	278,201	63%	283,524	(5,323)	-2%
Out-of-District	43,656,422	30,657,427	70%	29,330,083	1,327,344	5%
Non-Resident	2,204,422	2,630,736	119%	1,812,997	817,739	45%
Non-Funded	66,000	69,510	105%	67,830	1,680	2%
Waivers and Exemptions	(3,700,000)	(3,007,219)	81%	(2,535,074)	(472,145)	19%
Allowances and Discounts	(3,021,360)	(2,062,050)	68%	(1,753,753)	(308,297)	18%
Bad Debts	(30,000)	(3,970)	13%	(18,414)	14,444	-78%
Total Net Tuition	39,614,701	28,562,635	72%	27,187,193	1,375,442	5%
Fees						
General Use Fee	28,422,150	19,428,242	68%	18,248,871	1,179,371	6%
Lab and Course Fees	4,536,332	2,731,731	60%	2,436,576	295,155	12%
Workforce Fees	900,000	939,558	104%	679,665	259,893	38%
Total Net Fees	33,858,482	23,099,531	68%	21,365,112	1,734,419	8%
Total Net Tuition and Fees	73,473,183	51,662,166	70%	48,552,305	3,109,861	6%
Auxiliary Enterprises						
Housing	4,930,871	3,095,597	63%	3,136,265	(40,668)	-1%
Food Service	5,832,895	3,626,252	62%	2,997,228	629,024	21%
Bookstore	925,000	572,449	62%	335,436	237,013	71%
Parking	1,900,000	1,730,719	91%	1,647,080	83,639	5%
Other Sources	650,000	248,910	38%	232,900	16,010	7%
Auxiliary Allowances and Discounts	(1,329,190)	(830,020)	62%	(798,992)	(31,028)	4%
Total Auxiliary Enterprises	12,909,576	8,443,907	65%	7,549,917	893,990	12%
Property Taxes	2,278,968	2,216,634	97%	2,237,240	(20,606)	-1%
Interest - Operating	500,000	1,853,199	371%	324,855	1,528,344	470%
Miscellaneous Revenue						
Educational Sales and Services	415,160	465,952	112%	454,186	11,766	3%
Foundation		76,845	100%	47,720	29,125	61%
HEERF				13,289,334	(13,289,334)	-100%
Workstudy Reimbursement	437,081	169,551	39%	311,537	(141,986)	-46%
Total Miscellaneous Revenue	852,241	712,348	84%	14,102,777	(13,390,429)	-95%
<b>Total Operating Revenue</b>	<b>\$ 121,299,838</b>	<b>\$ 83,262,969</b>	<b>69%</b>	<b>\$ 91,032,801</b>	<b>\$ (7,769,832)</b>	<b>-9%</b>

**BLINN COLLEGE DISTRICT**  
**Statement of Expenditures By Function**  
**Month Ended March 31, 2023 and 2022**  
**(58% Of Fiscal Year)**

	Current Fiscal Year 2023			Prior FY	Monthly Variance	
		Actual	% Actual	Actual	FY23 vs FY22	
	Budget	03/31/23	To Budget	03/31/22	Dollars	Percent
<b>Operating Expenditures</b>						
General Academic & Vocational Instruction	\$ 44,923,704	\$ 28,603,213	64%	\$ 26,866,681	\$ 1,736,532	6%
Public Service	265,000	72,190	27%	73,193	(1,003)	-1%
Star of Republic Museum				3,896	(3,896)	-100%
Academic Support	10,655,012	5,405,726	51%	5,058,037	347,689	7%
Library Services	1,892,817	1,104,383	58%	1,074,641	29,742	3%
Student Services	8,522,804	3,904,352	46%	3,997,647	(93,295)	-2%
Institutional Support	19,999,747	10,007,539	50%	9,303,523	704,016	8%
Operation and Maintenance of Plant						
Plant Support	4,147,827	2,272,805	55%	2,083,893	188,912	9%
Building Maintenance	3,888,235	1,991,712	51%	1,692,268	299,444	18%
Custodial Services	1,537,270	897,060	58%	749,889	147,171	20%
Grounds Maintenance	640,901	310,097	48%	245,374	64,723	26%
Campus Security	3,643,889	1,974,209	54%	1,733,262	240,947	14%
Total Operating and Maintenance of Plant	13,858,122	7,445,883	54%	6,504,686	941,197	14%
Auxiliary Enterprises						
Housing	2,619,930	1,564,281	60%	1,448,829	115,452	8%
Food Services	4,280,069	2,360,258	55%	2,300,069	60,189	3%
Bookstore	3,000	108	0%	-		0%
Parking	37,000	872	2%	6,633	(5,761)	-87%
Athletics	3,279,330	2,123,006	65%	1,796,653	326,353	18%
Student Center	1,162,750	605,000	52%	530,196	74,804	14%
Student Activities	574,198	261,451	46%	217,691	43,760	20%
Miscellaneous Auxiliary	483,236	215,819	45%	180,696	35,123	19%
Total Auxiliary Enterprises	12,439,513	7,130,795	57%	6,480,767	650,028	10%
<b>Total Operating Expenditures</b>	<b>\$ 112,556,719</b>	<b>\$ 63,674,081</b>	<b>57%</b>	<b>\$ 59,363,071</b>	<b>\$ 4,311,010</b>	<b>7%</b>



**BLINN COLLEGE DISTRICT**  
**Statement of Expenditures By Category**  
**Month Ended March 31, 2023 and 2022**  
**(58% Of Fiscal Year)**

	Current Fiscal Year 2023			Prior FY	Monthly Variance	
		Actual	% Actual	Actual	FY23 vs FY22	
	Budget	03/31/23	To Budget	03/31/22	Dollars	Percent
<b>Salaries and Wages</b>						
Staff Salaries	\$ 28,490,894	\$ 15,452,548	54%	\$ 13,684,211	\$ 1,768,337	13%
Faculty Salaries	34,235,433	22,244,310	65%	21,553,978	690,332	3%
Benefits	20,071,404	10,754,408	54%	10,361,230	393,178	4%
<b>Total Salaries and Wages</b>	<b>82,797,731</b>	<b>48,451,266</b>	<b>59%</b>	<b>45,599,419</b>	<b>2,851,847</b>	<b>6%</b>
<b>Maintenance and Operations</b>						
Maintenance	1,798,724	1,068,100	59%	880,228	187,872	21%
Small Business Development Center	165,000	72,190	44%	73,193	(1,003)	-1%
Travel	2,250,266	1,038,006	46%	706,230	331,776	47%
Services	10,879,152	5,855,511	54%	5,364,631	490,880	9%
Consumables	6,354,155	2,292,644	36%	2,497,745	(205,101)	-8%
Utilities & Telephone	3,443,174	2,072,536	60%	1,861,953	210,583	11%
Insurance	1,092,057	1,022,108	94%	881,996	140,112	16%
Miscellaneous	1,747,726	759,798	43%	808,656	(48,858)	-6%
Facility Rental	1,614,450	572,534	35%	582,526	(9,992)	-2%
Furniture, Equipment, and Property	414,284	469,388	113%	106,494	362,894	341%
<b>Total Maintenance and Operations</b>	<b>29,758,988</b>	<b>15,222,815</b>	<b>51%</b>	<b>13,763,652</b>	<b>1,459,163</b>	<b>11%</b>
<b>Total Operating Expenditures</b>	<b>112,556,719</b>	<b>63,674,081</b>	<b>57%</b>	<b>59,363,071</b>	<b>4,311,010</b>	<b>7%</b>
<b>Non-Operating Expenditures</b>						
Replacement and Renovations				909,237	(909,237)	-100%
Capital Projects - Budgeted						
Contingency						
Debt Service	8,743,119	6,933,559	79%	6,822,434	111,125	2%
<b>Total Non-Operating Expenditures</b>	<b>8,743,119</b>	<b>6,933,559</b>	<b>79%</b>	<b>7,731,671</b>	<b>(798,112)</b>	<b>-10%</b>
<b>Total Expenditures</b>	<b>\$ 121,299,838</b>	<b>\$ 70,607,640</b>	<b>58%</b>	<b>\$ 67,094,742</b>	<b>\$ 3,512,898</b>	<b>5%</b>
<b>Non-Budgeted Capital Projects</b>						
<b>Capital Projects - Bond Funds</b>						
2019 Bond Project - STEI Building	\$ -			\$ 1,722,831		
2020 Bond Project - RELIS II				9,255,900		
	<u>\$ -</u>			<u>\$ 10,978,731</u>		
<b>Master Plan Projects - Unrestricted Reserves</b>						
Brenham Campus Projects	\$ 1,912,272			\$ 2,122,120		
Bryan Campus Projects	268,523			130,960		
RELLIS Campus Projects	1,453,750			2,383,417		
	<u>\$ 3,634,545</u>			<u>\$ 4,636,497</u>		
<b>Property Purchases</b>						
Brenham Campus Property Purchase	\$ 799,984			\$ -		
Bryan Campus Property Purchase						
	<u>\$ 799,984</u>			<u>\$ -</u>		
R&R - Unrestricted Cash	<u>\$ 1,717,718</u>					
<b>2021 Ice Storm</b>						
Insurance Proceeds	\$ 6,746,826			\$ 5,850,229		
<b>Disaster Repairs</b>						
Brenham Campus	6,068,381			5,085,623		
Bryan Campus	395,741			361,741		
RELLIS Campus	4,883			4,883		
Schulenburg Campus	428			428		
Insurance Less Expenditures	<u>\$ 277,393</u>			<u>\$ 397,554</u>		
<b>2021 Hail Storm</b>						
Insurance Proceeds	\$ 129,451			\$ 78,602		
<b>Disaster Repairs</b>						
Bryan Campus	83,527			83,527		
Insurance Less Expenditures	<u>\$ 45,924</u>			<u>\$ (4,925)</u>		
<b>2022 Winter Storm</b>						
Insurance Proceeds	\$ 375,820					
<b>Disaster Repairs</b>						
Brenham Campus	210,515					
Insurance Less Expenditures	<u>\$ 165,305</u>					

**BLINN COLLEGE DISTRICT**  
**Statement of Net Position**  
**March 31, 2023 and 2022**

	2023	2022	Monthly Variance FY23 vs FY22	
			Dollars	Percent
<b>Assets</b>				
Cash in banks and petty cash ( C )	\$ 37,288,121	\$ 36,664,995	\$ 623,126	2%
Cash in investment pools ( C )	19,008,646	47,269,507	(28,260,861)	-60%
Scholarship fund Investments ( C )	1,278,610	643,156	635,454	99%
Bond Reserve fund Investments ( C )	8,778,112	8,689,307	88,805	1%
Capital and deferred Maintenance Reserve Investments	15,000,000	15,000,000	-	0%
Technology Project Reserve Investments	2,036,075	2,010,234	25,841	1%
Auxiliary Project Reserve Investments	55,114	726,737	(671,623)	-92%
Construction and Restricted Fund Investments ( C )		3,519,831	(3,519,831)	-100%
Certificate of Deposit and Treasury( C )	51,461,911	32,955,990	18,505,921	56%
Accounts Receivable				
Student tuition and fees (net)	3,974,264	2,874,259	1,100,005	38%
State appropriations	12,043,137	12,043,135	2	0%
Other (A1)	2,244,257	2,669,892	(425,635)	-16%
Other assets	717,251	372,969	344,282	92%
Capital assets (net) (B)	229,397,807	200,032,178	29,365,629	15%
<b>Total Assets</b>	<b>383,283,305</b>	<b>365,472,190</b>	<b>17,811,115</b>	<b>5%</b>
<b>Deferred Outflows</b>				
Deferred outflows related to OPEB (GASB 75)	13,937,410	17,448,279	(3,510,869)	-20%
Deferred outflows related to pensions (GASB 68)	7,678,463	10,096,571	(2,418,108)	-24%
<b>Total Deferred Outflows</b>	<b>21,615,873</b>	<b>27,544,850</b>	<b>(5,928,977)</b>	<b>-22%</b>
<b>Liabilities</b>				
Accounts payable	3,195,244	2,676,584	518,660	19%
Accrued payroll liabilities	5,151,901	4,857,183	294,718	6%
Deposits Payable	268,596	171,600	96,996	57%
Agency Funds (A2)	822,968	601,734	221,234	37%
Deferred Revenues				
Student Revenue (A3)	14,115,854	13,042,680	1,073,174	8%
Grants and Contracts	57,117	52,905	4,212	8%
Bonds payable (B)	110,159,559	115,220,208	(5,060,649)	-4%
Lease Liability	10,584,886		10,584,886	100%
Net pension liability related to OPEB (GASB 75)	63,741,752	60,560,299	3,181,453	5%
Net pension liability related to pensions (GASB 68)	10,718,973	22,487,626	(11,768,653)	-52%
<b>Total Liabilities</b>	<b>218,816,850</b>	<b>219,670,819</b>	<b>(853,969)</b>	<b>0%</b>
<b>Deferred Inflows</b>				
Deferred inflows related to OPEB (GASB 75)	10,975,224	15,416,794	(4,441,570)	-29%
Deferred inflows related to pensions (GASB 68)	12,744,782	4,940,758	7,804,024	158%
<b>Total Deferred Inflows</b>	<b>23,720,006</b>	<b>20,357,552</b>	<b>3,362,454</b>	<b>17%</b>
<b>Net Assets</b>				
Invested in capital assets, net of related debt	105,286,816	101,200,224	4,086,592	4%
Leases	13,135,693		13,135,693	100%
Student aid	1,552,558	2,160,632	(608,074)	-28%
Debt service	8,946,867	8,918,600	28,267	0%
Unrestricted	15,615,506	20,316,342	(4,700,836)	-23%
Current year increase (decrease) in Net Assets	17,824,882	20,392,871	(2,567,989)	-13%
<b>Total Net Assets</b>	<b>162,362,322</b>	<b>152,988,669</b>	<b>9,373,653</b>	<b>6%</b>
<b>Total Liabilities, Deferred Inflows, &amp; Net Assets</b>	<b>\$ 404,899,178</b>	<b>\$ 393,017,040</b>	<b>\$ 11,882,138</b>	<b>3%</b>

**Notes**

(A) See the accompanying **Supplementary Information schedule**

(B) Balances for each period are the prior fiscal year end balance (i.e. 8/31/2023 balance is the 8/31/2022 ending balance):

Capital Assets (net) - Capitalizable asset expenditures and the depreciation allowance are recorded at the fiscal year-end

Bonds Payable - Debt Service payments are recorded in the Statement of Current Operating Funds - Expenditures during the fiscal year are reclassified to Net Assets at the fiscal year

Net Assets - The increase (decrease) in Net Assets are allocated at the end of the fiscal year.

( C ) See the current period **Investment Report By Fund** for the detail of these accounts

**BLINN COLLEGE DISTRICT**  
**Statement of Net Position**  
**Supplementary Information**  
**March 31, 2023 and 2022**

	2023	2022
<b>(1) Other Receivables</b>		
Third Party Billings (TX Tomorrow, etc.) (a)	\$ 744,962	\$ 1,778,049
Property Tax Receivable	23,777	19,726
Accrued Interest (b)	477,379	79,251
Gov't Agency receivables (SBDC, TWC, etc.) (c)	191,932	93,853
Miscellaneous (d)	53,630	171,018
Student Loans (e)	752,577	527,995
	<b>\$ 2,244,257</b>	<b>\$ 2,669,892</b>
<b>(2) Agency Funds</b>		
Scholarship Checks	<b>\$ 822,968</b>	<b>601,734</b>
<b>(3) Deferred Revenue</b>		
Spring 2023		
Tuition & Fees	11,210,463	10,713,381
Auxiliary Housing & Meals and Parking	1,320,082	1,201,176
May Mini 2023		
Tuition & Fees	174,840	112,760
Auxiliary Housing & Meals and Parking		
Summer I 2023		
Tuition & Fees	979,837	710,685
Auxiliary Housing & Meals and Parking	480	2,250
Summer II 2023		
Tuition & Fees	393,422	301,378
Auxiliary Housing & Meals and Parking	90	1,050
Fall 2023		
Auxiliary Housing & Meals and Parking	36,640	
	<b>\$ 14,115,854</b>	<b>\$ 13,042,680</b>

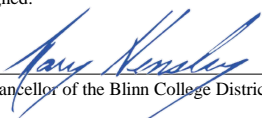
**Notes**

- (a) Third party collections have increased since February 2022.
- (b) The increase in accrued interest is directly related to the increase in interest rates during FY23.
- (c) The increase in government agency receivables is due to variances in student federal and state grant awards.
- (d) The decrease in miscellaneous receivables is due to the timing of when Foundation scholarships posted (posted earlier in FY22).
- (e) The increase in student loans is due to an increase in private student loans.

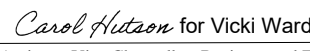
**BLINN COLLEGE DISTRICT  
INVESTMENT REPORT BY FUND  
March 31, 2023**

	Coupon Interest Rate	Book Value 02/28/2023	Receipts	Interest Earnings	Distributions	Book Value 03/31/2023	Market Value 03/31/2023
<b>Unrestricted Cash and Cash Equivalents</b>							
Brenham National Bank		8,767,048.44	67,011,109.01	13,875.70	(69,160,640.85)	6,631,392.30	6,631,392.30
Bank of Brenham		30,188,661.20		108,188.13		30,296,849.33	30,296,849.33
Fayetteville Bank		198,994.76	2,774.97	59.76	(1,086.02)	200,743.47	200,743.47
Citizens State Bank		150,265.21	688.85			150,954.06	150,954.06
Cash on Hand - Petty Cash		8,181.44				8,181.44	8,181.44
<b>Subtotal Cash in Bank and Petty Cash</b>		<b>39,313,151.05</b>	<b>67,014,572.83</b>	<b>122,123.59</b>	<b>(69,161,726.87)</b>	<b>37,288,120.60</b>	<b>37,288,120.60</b>
TexPool - Unrestricted Operating Fund Balance	4.79%	106,892.67		418.59		107,311.26	107,311.26
Lone Star/General Acct. - Unrestricted	4.64%	884,285.98		14,902.23	(496,871.80)	402,316.41	402,316.41
LOGIC - Unrestricted	4.82%	20,625,965.72		83,683.60	(2,500,000.00)	18,209,649.32	18,209,649.32
TexStar - Unrestricted	4.61%	288,240.16		1,127.73		289,367.89	289,367.89
<b>Subtotal Cash in Investment Pools</b>		<b>21,905,384.53</b>	<b>-</b>	<b>100,132.15</b>	<b>(2,996,871.80)</b>	<b>19,008,644.88</b>	<b>19,008,644.88</b>
U.S. Treasury Bill 912828WJ5 05/15/24	4.80%		3,244,110.00			3,244,110.00	3,244,110.00
Bank of Brenham CD Investment		38,158,100.82		19,845.59		38,177,946.41	38,177,946.41
Multi-Bank Securities CD Investment		10,039,855.00				10,039,855.00	10,039,855.00
<b>Subtotal Cash in Certificates of Deposit and Treasury</b>		<b>48,197,955.82</b>	<b>3,244,110.00</b>	<b>19,845.59</b>	<b>-</b>	<b>51,461,911.41</b>	<b>51,461,911.41</b>
<b>Unrestricted Investments Reserved for Auxiliary</b>							
TD Ameritrade - Unrestricted		55,088.25		25.38		55,113.63	55,113.63
<b>Subtotal Unrestricted Investments Reserved for Auxiliary</b>		<b>55,088.25</b>	<b>-</b>	<b>25.38</b>	<b>-</b>	<b>55,113.63</b>	<b>55,113.63</b>
<b>Unrestricted Investments Reserved for Technology</b>							
TD Ameritrade - Unrestricted		2,035,137.37		937.66		2,036,075.03	2,036,075.03
<b>Subtotal Unrestricted Investments Reserved for Technology</b>		<b>2,035,137.37</b>	<b>-</b>	<b>937.66</b>	<b>-</b>	<b>2,036,075.03</b>	<b>2,036,075.03</b>
<b>Unrestricted Investments Reserved for Capital Projects</b>							
LoneStar Unrestricted	4.82%	2,896,784.33	496,871.80			3,393,656.13	3,393,656.13
Unrealized Gain (Loss) on Unrestricted Investments		(688,355.29)		97,551.84	(590,803.45)	(590,803.45)	(590,803.45)
TD Ameritrade - Unrestricted		12,791,570.96		5,576.36	(600,000.00)	12,197,147.32	12,197,147.32
<b>Subtotal Unrestricted Investments Reserved for Capital</b>		<b>15,000,000.00</b>	<b>496,871.80</b>	<b>103,128.20</b>	<b>(600,000.00)</b>	<b>15,000,000.00</b>	<b>15,000,000.00</b>
<b>Total Unrestricted Cash and Cash Equivalents</b>		<b>126,506,717.02</b>	<b>70,755,554.63</b>	<b>346,192.57</b>	<b>(72,758,598.67)</b>	<b>124,849,865.55</b>	<b>124,849,865.55</b>
<b>Scholarship Fund Investments</b>							
TexPool - Scholarship Fund	4.79%	840,319.31		3,290.71		843,610.02	843,610.02
Blue Bell Creameries, L.P.		435,000.00				435,000.00	435,000.00
<b>Subtotal Endowment &amp; Scholarship Fund Investments</b>		<b>1,275,319.31</b>	<b>-</b>	<b>3,290.71</b>	<b>-</b>	<b>1,278,610.02</b>	<b>1,278,610.02</b>
<b>Bond Reserve Fund Investments</b>							
TD Ameritrade - Bond Reserve		4,847,689.00		1,015.24		4,848,704.24	4,848,704.24
Unrealized Gain (Loss) on Bond Reserve		(160,660.90)		39,060.15	(260,000.00)	(381,600.75)	(381,600.75)
FHLB - 313382AX1 (Due 03/10/23)	2.13%	1,371,324.91		28,675.09	(1,400,000.00)	-	-
Unrealized Gain (Loss) on Bond Reserve Investments		14,641.09			(14,641.09)	-	-
U.S. Treasury Bill 912828WJ5 05/15/24	4.80%	1,481,168.00	1,605,890.00			3,087,058.00	3,087,058.00
U.S. Treasury Bill 912828CC3 05/15/24	4.51%	1,223,950.24				1,223,950.24	1,223,950.24
<b>Subtotal Bond Reserve Fund Investments</b>		<b>8,778,112.34</b>	<b>1,605,890.00</b>	<b>68,750.48</b>	<b>(1,674,641.09)</b>	<b>8,778,111.73</b>	<b>8,778,111.73</b>
<b>Total Restricted Investments</b>		<b>10,053,431.65</b>	<b>1,605,890.00</b>	<b>72,041.19</b>	<b>(1,674,641.09)</b>	<b>10,056,721.75</b>	<b>10,056,721.75</b>
<b>Total Cash, Cash Equivalents and Investments</b>		<b>136,560,148.67</b>	<b>70,755,554.63</b>	<b>418,233.76</b>	<b>(74,433,239.76)</b>	<b>134,906,587.30</b>	<b>134,906,587.30</b>
<b>Benchmark Rate</b>							
		03/31/2023	02/28/2023	01/31/2023	12/31/2022	11/30/2022	10/31/2022
182 Day T-Bill		4.65%	4.84%	4.68%	4.60%	4.55%	4.44%
One Year Treasury		4.55%	5.05%	4.79%	4.72%	4.78%	4.55%
Two Year Treasury		4.02%	4.67%	4.21%	4.40%	4.48%	4.42%
Five Year Treasury		3.63%	4.16%	3.63%	3.94%	3.92%	4.25%

This schedule is in compliance with the Public Funds Investment Act and the Investment Policy of Blinn College  
Signed:

  
Chancellor of the Blinn College District

  
Vice Chancellor, Business and Finance/CFO

 for Vicki Ward  
Assistant Vice Chancellor, Business and Finance

## SUPPLEMENTARY SCHEDULES AND GRAPHS

**BLINN COLLEGE DISTRICT**  
**Certificate of Deposit Investment Detail**  
**March 31, 2023**

	<b>Maturity</b>	<b>Rate</b>	<b>Book Value</b> <b>02/28/2023</b>	<b>Receipts</b>	<b>Interest</b> <b>Earnings</b>	<b>Distributions</b>	<b>Book Value</b> <b>03/31/2023</b>
<b>Bank of Brenham</b>							
Certificate of Deposit 4144	09/19/23	3.05%	\$ 2,070,702.52				\$ 2,070,702.52
Certificate of Deposit 6072	10/07/23	3.83%	2,078,527.83				2,078,527.83
Certificate of Deposit 6081	11/07/23	4.24%	2,081,953.75				2,081,953.75
Certificate of Deposit 6086	11/07/23	4.52%	2,067,189.74				2,067,189.74
Certificate of Deposit 6093	01/09/24	4.25%	2,610,940.57				2,610,940.57
Certificate of Deposit 6094	02/09/24	4.32%	2,615,890.16				2,615,890.16
Certificate of Deposit 6481	02/19/24	4.32%	3,036,216.54				3,036,216.54
Certificate of Deposit 6932	06/09/23	2.63%	2,268,612.70				2,268,612.70
Certificate of Deposit 6097	04/09/24	3.83%	2,616,978.10				2,616,978.10
Certificate of Deposit 6096	03/09/23	4.64%	2,592,999.23		18,214.49		2,611,213.72
Certificate of Deposit 6482	03/19/23	4.64%	3,036,731.49		1,631.10		3,038,362.59
Certificate of Deposit 6500	10/19/23	0.75%	3,038,624.80				3,038,624.80
Certificate of Deposit 6502	11/19/23	0.90%	3,042,733.39				3,042,733.39
Certificate of Deposit 7105	07/26/23	2.79%	5,000,000.00				5,000,000.00
<b>Total Bank of Brenham CD Investment</b>			<b>\$ 38,158,100.82</b>	<b>\$ -</b>	<b>\$ 19,845.59</b>	<b>\$ -</b>	<b>\$ 38,177,946.41</b>
<b>Multi-Bank Securities</b>							
Ally Bank	03/08/24	3.25%	\$ 246,000.00				\$ 246,000.00
Amerant Bank NA	09/07/23	3.00%	242,000.00				242,000.00
Apex Bank	09/15/23	3.15%	249,000.00				249,000.00
Bank of California	10/30/23	1.95% *	198,118.00				198,118.00
Bankers Bank of the West	03/15/24	3.15%	249,000.00				249,000.00
Beal Bank, Texas State Bank	09/13/23	3.10%	242,000.00				242,000.00
Bell Bank	01/16/24	3.20%	249,000.00				249,000.00
BMO Harris Bank	03/11/24	3.15%	246,000.00				246,000.00
BMW Bank of North America	09/18/23	0.35% *	241,862.00				241,862.00
California First National Bank	02/28/24	1.30% *	238,875.00				238,875.00
Citizens Bank	09/14/23	3.25%	242,000.00				242,000.00
City & County	03/14/24	3.40%	249,000.00				249,000.00
Connection Bank	03/12/24	3.10%	249,000.00				249,000.00
Credit Union of Texas	03/18/24	3.45%	249,000.00				249,000.00
Customers Bank	09/06/23	3.10%	242,000.00				242,000.00
Discover Bank	03/13/24	3.30%	245,000.00				245,000.00
DMB Community Bank	12/08/23	3.00%	249,000.00				249,000.00
First Carolina Bank	01/16/24	3.20%	249,000.00				249,000.00
First Oklahoma Bank	09/15/23	3.05%	249,000.00				249,000.00
First Republic Bank	09/08/23	3.00%	242,000.00				242,000.00
First Technology Federal Credit Union	09/15/23	3.40%	249,000.00				249,000.00
Forbriht Bank	03/18/24	3.30%	249,000.00				249,000.00
Forte Bank	09/08/23	2.85%	249,000.00				249,000.00
JPMorgan Chase Bank	03/15/24	3.00%	247,000.00				247,000.00
Luminate Bank	09/15/23	3.10%	249,000.00				249,000.00
Morgan Stanley Bank	03/08/24	3.20%	246,000.00				246,000.00
Morgan Stanley Pvt Bank	03/15/24	3.45%	246,000.00				246,000.00
Northern Bank & Trust Company	03/18/24	3.40%	245,000.00				245,000.00
Oceanfirst Bank	09/14/23	3.05%	242,000.00				242,000.00
Old Missouri Bank	03/15/24	3.20%	249,000.00				249,000.00
Parkway Bank and Trust Company	09/08/23	3.00%	242,000.00				242,000.00
Preferred Bank	09/22/23	3.10%	249,000.00				249,000.00
Safra National Bank	10/10/23	3.05%	246,000.00				246,000.00
Santander Bank	09/07/23	3.10%	242,000.00				242,000.00
Sharonview Federal Credit Union	09/15/23	3.35%	249,000.00				249,000.00
Signature Bank	09/08/23	3.05%	242,000.00				242,000.00
Southern Bank	09/08/23	2.85%	243,000.00				243,000.00
Texas Bank	09/15/23	3.10%	242,000.00				242,000.00
UBS Bank USA	03/08/24	3.25%	249,000.00				249,000.00
Union Square Credit Union	03/15/24	3.50%	249,000.00				249,000.00
Wasatch Peaks	09/07/23	3.20%	249,000.00				249,000.00
<b>Total Multi-Bank Investment</b>			<b>\$ 10,039,855.00</b>	<b>\$ -</b>	<b>\$ -</b>	<b>\$ -</b>	<b>\$ 10,039,855.00</b>
<b>Total CD Investment</b>			<b>\$ 48,197,955.82</b>	<b>\$ -</b>	<b>\$ 19,845.59</b>	<b>\$ -</b>	<b>\$ 48,217,801.41</b>

\*Discount on CD purchase

**BLINN COLLEGE DISTRICT**  
**Analysis of Replacements & Renovations**  
**and Capital Projects**  
**As of March 31, 2023**

<b>Project Description</b>	<b>Monthly Transactions Mar-23</b>	<b>Project Fiscal Year to Date as of 03/31/2023</b>	<b>Total Project to Date as of 03/31/2023</b>
<b>Capital Projects - Bond Funds</b>			
Brenham Science, Tech, Engineering and Innovation Building	694	6,422	31,916,439
RELLIS Phase II	258,796	1,453,750	29,486,812
<b>Total Bond Projects in Progress</b>	<b>259,490</b>	<b>1,460,172</b>	<b>61,403,251</b>
<b>Master Plan Projects</b>			
Bryan New Administration/Student Services Building	187,122	268,523	782,335
Brenham eSports Renovation at Mill Creek		151,129	552,709
Brenham Old Main Renovation	15,356	315,224	3,436,407
Brenham College Ave and Sidewalk		31,160	108,044
Brenham Dreyer Field	25,413	1,139,949	3,468,550
Brenham Parking Lot K	3,268	51,684	51,684
Brenham Holleman, Memorial, and Solons Halls Demolition	181,164	216,704	685,475
<b>Total Master Plan Projects in Progress</b>	<b>412,323</b>	<b>2,174,373</b>	<b>9,085,204</b>
<b>Capital Projects</b>			
Bryan Chiller Replacement and Automation	2,400	86,750	524,249
Bryan Interior Upgrades and Access	69,073	212,399	461,572
Bryan Second Floor Renovation		13,865	13,865
Bryan A C D Roof Upgrades		18,000	18,000
Brenham BCPA HVAC Upgrades	4,786	31,905	31,905
Brenham BCPA Roof & Gutter Replacements	20,250	20,250	20,250
Brenham Campus Property Purchase		799,984	799,984
<b>Total Capital Projects Reserve Funds</b>	<b>96,509</b>	<b>1,183,153</b>	<b>1,869,825</b>
<b>Total Repairs &amp; Renovations</b>	<b>416,571</b>	<b>1,334,549</b>	<b>1,334,549</b>
<b>Total of Construction and R&amp;R</b>	<b>1,184,893</b>	<b>6,152,247</b>	<b>73,692,830</b>

BLINN COLLEGE FOUNDATION SCHOLARSHIPS AND ENDOWMENTS  
As of March 31, 2023

DESCRIPTION	CORPUS	Accum Earning September 1, 2022	Donations	Interest Earned YTD	Scholarships Awarded	Book Balance March 31, 2023
ADN FACULTY	\$ 15,000.00	\$ 192.14	\$ -	\$ 422.10	\$ -	\$ 15,614.24
ALPHA BETA ALUMNI	11,000.00	1,223.68		324.62	(540.00)	12,008.30
ALUMNI AND FRIENDS	45,000.00	6,357.76		1,411.96	(559.00)	52,210.72
ANDERSON, AGNES "ANDY"		915.42		25.23	(40.00)	900.65
ANDERSON, AGNES KARLIK - NURSING	21,760.00	2,860.22		679.01	(992.00)	24,307.23
ANDERSON, CLINTON G.	10,000.00	1,168.93		307.80	(494.00)	10,982.73
ANDERSON, ELTON B.		193.60		5.37		198.97
APPEL JR., MARY LOU AND ROBERT	16,525.00	1,300.63		484.72	(394.00)	17,916.35
APPEL, BILLYE JEAN AND ARLEIGH	19,450.57	1,570.23		575.22	(464.00)	21,132.02
APPEL, CAROLINE AND ROBERT C.	11,000.00	974.13		318.53	(529.00)	11,763.66
ARLITT, JACK WALTER	50,577.97	4,622.30		1,497.11	(2,225.00)	54,472.37
ARLITT, JACK - TECHNICAL	27,225.16	1,751.12		772.62	(1,168.00)	28,580.89
ARLITT, OLEIS H.	110,675.00	7,354.58		3,198.69	(5,273.00)	115,955.27
ASHORN BROTHERS	19,285.00	2,532.09		589.97	(985.00)	21,422.06
ATKINSON, DR. - ALUMNI LETTERMEN	17,520.00	1,522.10		515.37	(860.00)	18,697.47
ATKINSON, EVA BEAZLEY	12,000.00	939.60		343.62	(572.00)	12,711.22
ATKINSON, KATHERINE SMITH	34,000.00	2,640.05		993.86	(1,215.00)	36,418.92
ATKINSON, NANCY SHEPPEARD	15,945.00	1,228.50		465.45	(759.00)	16,879.95
ATKINSON, PRESIDENT EMERITUS JAMES H.	15,750.00	1,395.05		458.42	(758.00)	16,845.47
BABBITT, AUGGIE - PTA	27,811.32	3,766.17		859.24	(1,256.00)	31,180.73
BARTON, OLIVE MAE AND SARA ANN NURSING			15,000.00	77.07		15,077.07
BERGER, INEZ - REAL ESTATE SCHOLAR	15,950.00	2,665.09		496.03	(823.00)	18,288.12
BERRY, NANCY AND LEONARD	20,000.00	1,385.21		570.22	(862.00)	21,093.43
BISHOP, ANN SCHWARTZ	15,050.00	1,413.59	1,000.00	469.99	(331.00)	17,602.58
BLINN BIOLOGY FOR STUDENTS	15,000.00	1,666.61		463.06		17,129.67
BLINN COLLEGE ALUMNI AND FRIENDS	12,200.19	1,783.62		379.93	(309.00)	14,054.74
BLINN COLLEGE FOUNDATION - BRENHAM	53,370.03	3,794.34		1,545.94	(2,567.00)	56,143.31
BLINN COLLEGE FOUNDATION - BRYAN	51,873.00	3,690.90		1,524.53	(1,962.00)	55,126.43
BLINN COLLEGE PROFESSIONAL ASSOCIATION	24,615.00	1,921.73		722.79	(587.00)	26,672.53
BLINN COLLEGE TECHNICAL ED CENTER	1,000,279.02	219,215.74		33,882.21		1,253,376.97
BOB BULLOCK ENDOWED VOCATIONAL	43,941.79	3,074.59		1,273.40	(2,089.00)	46,200.77
BOCKHORN, DR. OSCAR AND IRENE	20,000.00	2,094.29		613.86		22,708.15
BOEHM SR., HENRY AND ETHEL	18,797.78	1,394.66	500.00	556.99	(893.00)	20,356.43
BOEHM, DR. AND MRS. HENRY J.	26,757.64	1,735.55		773.57	(1,259.00)	28,007.76
BOEHM, DR. HENRY J.	25,000.00	1,777.29		726.25	(1,079.00)	26,424.54
BOEHM, MR. AND MRS. ROBERT WILLIAM	16,000.00	1,801.71	500.00	501.26	(787.00)	18,015.97
BOEHM, TEDDY VANDERWERTH			15,466.20	365.72		15,831.92
BOEHNEMANN, JANE	25,265.07	2,315.09		764.03	(576.00)	27,768.19
BOEHNKE, BEN W.	20,548.44	1,831.48		616.74	(1,000.00)	21,996.66
BOEHNKE, SUE	14,364.93	1,590.65	4,050.00	535.49	(705.00)	19,836.06
BOEHM WEHRING, MR. GLENN AND KATHRYN	15,050.00	1,463.83		439.71	(730.00)	16,223.53
BOENKER, HENRY AND MARTHA AND ESTHER	15,000.00	1,485.62		446.05	(729.00)	16,202.67
BOHNE, WILBURN "BILL"	633,009.10	55,090.38		18,779.33	(25,140.00)	681,738.81
BOHNE, WILBURN "BILL" TECHNICAL	305,000.00	43,383.21		9,679.42		358,062.63
BOSWELL JR., ANCEL	86,728.04	7,029.16		2,552.30	(2,747.00)	93,562.50
BRAZOS COUNTY - GO TEXAN	40,000.00	12,254.99		1,451.86		53,706.85
BRENHAM CUBS BASEBALL	20,000.00	3,408.68		650.36		24,059.05
BRENHAM ELKS (B.P.O.E.#979)	40,850.00	8,698.98		1,354.06	(1,250.00)	49,653.04
BRENHAM EVENING LIONS CLUB	18,200.00	1,980.00		546.39	(897.00)	19,829.39
BRENHAM NOON LIONS CLUB	15,000.00	1,205.76		431.11	(716.00)	15,920.86
BRENHAM ROTARY CLUB	37,786.00	2,066.11		1,107.23		40,959.34
BRENHAM UNIVERSITY WOMEN'S I - 1994	22,671.00	1,843.53		681.11		25,195.64
BRENHAM UNIVERSITY WOMEN'S II - 2003	22,151.00	2,103.74		673.89		24,928.63
BROESCHE, TRAVIS AND LUCILLE	28,900.00	2,089.51		838.38	(1,377.00)	30,450.89
BROWN FAMILY	15,000.00	1,370.21		442.93	(724.00)	16,089.14
BRYAN, SHARON AND CHIP	25,000.00	165.22		699.19		25,864.41
BRYANT, RAYMOND G.	53,286.75	4,093.87		1,552.14	(2,563.00)	56,369.76
BUCK, PORSCHA RAE	15,000.00	1,186.39		446.11	(715.00)	15,917.50
BULLARD, BRITT AND ERRIN	35,429.90	2,221.68		1,025.03	(759.00)	37,917.61
BURKHART, SUSAN	19,680.00	1,809.23		581.45	(950.00)	21,120.68
BURLESON COUNTY - GO TEXAN	25,000.00	5,826.71		837.53	(682.00)	30,982.25
BURT, WALDO F.	14,293.29	1,641.03		431.15	(704.00)	15,661.47
BURTON LIONS CLUB / SID B. STEVENSON	31,237.40	2,887.50		931.69	(1,000.00)	34,056.59
CALVERT, JERRY AND JAN	64,681.02	10,346.85		2,073.47	(2,182.00)	74,919.35
CANTEY FAMILY	17,250.00	1,613.86	1,000.00	537.55	(838.00)	19,563.41
CARNES, WILLIAM KENNETH	10,025.00	981.73		293.31	(486.00)	10,814.04
CARRINGTON, J. B.	6,465.00	549.32		190.90	(155.00)	7,050.22
CARTER, TRACY AND TAMARA I	25,000.00	1,340.60		726.40	(1,062.00)	26,005.00
CARTER, TRACY AND TAMARA II	25,000.00	1,340.60		730.47	(354.00)	26,717.07
CHESLEY, MARGARET	68,000.00	4,667.22	2,000.00	1,979.79	(3,212.00)	73,435.02
CHILDREN OF BLINN FACULTY AND STAFF	15,000.00	1,666.61		463.06		17,129.67
COATNEY, DOYLE	129,500.00	21,501.59		4,178.40	(3,351.00)	151,828.99
COLLERAIN SR., JOSEPH B.	60,000.00	7,060.86		1,848.87	(2,964.00)	65,945.73
COMMANDER, ROBERT DAVID	10,600.00	999.56		308.02	(513.00)	11,394.59
CRAWFORD, CHARLES AND GRACE	21,000.00	1,869.66		631.79	(926.00)	22,575.45
CUTRIGHT AND ALLEN ARCHITECTS	17,500.00	1,444.16		512.57	(837.00)	18,619.74
DALLMEYER, C. D. - BRENHAM WHOLESALE	15,000.00	1,234.59		431.85	(718.00)	15,948.44
DEBBAN-EATON NURSING	19,459.70	2,726.08		611.42	(981.00)	21,816.20
DERRICK, GERALD P.	16,057.94	2,540.28		505.60	(416.00)	18,687.82



BLINN COLLEGE FOUNDATION SCHOLARSHIPS AND ENDOWMENTS  
As of March 31, 2023

DESCRIPTION	CORPUS	Accum Earning September 1, 2022	Donations	Interest Earned YTD	Scholarships Awarded	Book Balance March 31, 2023
DIETRICH, OSCAR AND LILLIE M.	20,000.00	1,615.92		574.74	(966.00)	21,224.66
DIETRICH, VIRGINIA AND RAYMOND	15,000.00	1,905.19		466.23	(681.00)	16,690.41
DIETRICH, W. O. AND BOBBIE	19,562.14	3,266.66		634.28		23,463.08
DILLON, JAMES F. - VFW POST 7104-MELVIN H. REDDEHASE	15,125.00	1,984.97		475.39		17,585.36
DOBSON, LILLIAN ROSSING - RN	10,000.00	1,335.72		313.64	(256.00)	11,393.36
DONISI, BEATRICE BEDNAR	30,300.00	2,641.15		898.17	(664.00)	33,175.32
DREYER, LEROY AND JUNE	16,737.99	1,431.82		491.43	(816.00)	17,845.24
DUJKA, JOHN EXCELLENCE	15,000.00	192.80		422.11		15,614.91
DUREE, SAMUEL	20,000.00	1,759.26		592.58	(877.00)	21,474.84
DURHAM, JAMES	300,000.00	23,002.71		8,776.06	(13,205.00)	318,573.77
DUSOLD, DIANNE A.M.C.H.S.	15,000.00	1,121.89		447.92		16,569.81
EDWARDS, ORA LEE - VOCATIONAL NURSING SCH.	15,673.10	1,476.07		474.45	(396.00)	17,227.62
EHLERT, M.H. AND IRENE	20,000.00	5,503.95		692.92	(564.00)	25,632.88
EHRIG, ARTHUR H. AND MYRTLE	170,000.00	11,446.36		4,960.15	(7,010.00)	179,396.50
EICHLER, E.	20,000.00	1,748.16		581.69	(877.00)	21,452.85
ELLISON, CHUCK AND TEDI	20,000.00	849.99		567.57	(422.00)	20,995.56
EVERSBERG AND DRUMM	10,000.00	1,104.07		294.29	(512.00)	10,886.35
FIRST FINANCIAL TRUST BRYAN FAMILY	15,000.00	910.73		424.25	(641.00)	15,693.98
FLENCHEER, BEN AND BETSY	15,000.00	1,305.07		453.02		16,758.09
FRANKE, JOEL & PAM	17,720.00	1,761.63		527.43	(870.00)	19,139.06
FREEMAN, N. W. AND NORMA	45,000.00	3,531.63		1,313.99	(2,162.00)	47,683.62
FRIENDS OF BLINN-FAYETTE COUNTY	17,241.50	1,903.00		529.77	(423.00)	19,251.27
FUCHS, ROSA LEE	26,409.53	1,987.21		758.66	(1,282.00)	27,873.39
GERMANIA FARM MUTUAL INSURANCE ASSOCIATION	16,885.00	1,282.17		494.01	(402.00)	18,259.17
GERMANIA INSURANCE	25,000.00	1,517.88		736.77		27,254.65
GILES, ROBERT L. - PTK	19,739.54	1,558.95		575.96	(961.00)	20,913.45
GONZALES JR., JOSE GUADALUPE	15,000.00	192.80		422.11		15,614.91
GRAHAM MASONIC LODGE I	20,000.00	1,770.80		587.19	(1,521.00)	20,836.99
GRAHAM MASONIC LODGE II BLINN EDUCATORS	15,000.00	956.02		443.32		16,399.34
GRAHAM MASONIC LODGE III ALL PAST MASTERS	15,500.00	979.03		446.96	(500.00)	16,425.99
GRIFFIN, DAVID KEITH	11,000.00	1,161.27		322.79	(543.00)	11,941.06
HACKEMACK, R. F.	20,000.00	1,739.64		591.43	(876.00)	21,455.07
HALEY, STEVEN C. MEMORIAL THEATER ARTS	14,075.02	893.47		399.76	(603.00)	14,765.25
HALLSTEIN, EDWINA DAY	2,642,452.00	692,123.71		92,307.37	(22,375.30)	3,404,507.78
HALLSTEIN, FRED J. & EDWINA D.	60,000.00	4,622.11		1,740.82	(2,183.00)	64,179.93
HARRINGTON, REESE ELIZABETH	20,000.00	1,758.31		591.02	(877.00)	21,472.33
HARTMAN, FRED - BRENHAM BANNER PRESS	13,950.00	1,270.99		412.51	(673.00)	14,960.51
HASSKARL, KATHERINE MGE BROFF	33,670.00	4,220.47		1,044.24	(1,675.00)	37,259.71
HEINEKE, DR. AND MRS. GUS	29,848.85	2,332.34		886.90	(1,422.00)	31,646.08
HEJL, JOHN E. - CALDWELL H.S.	97,500.00	6,622.29		2,822.40	(4,142.00)	102,802.69
HEJL, JOHN E. - CALDWELL H.S. TECHNICAL	40,000.00	20,921.21	300,000.00	8,786.41		369,707.62
HELLER, CHARLES A.	16,586.51	1,403.57		480.44	(725.00)	17,745.52
HEMANN, LAWRENCE H.	20,125.00	8,783.79		803.20		29,711.99
HENRY, WALTER AND GENEVA HOUSLEY HOLLE	21,500.00	2,125.75		640.34	(1,044.00)	23,222.08
HICKS, KATHRYN KYLE	15,200.12	2,089.39		476.50	(764.00)	17,002.01
HODDE, A.W. JR.	25,500.00	1,610.18		753.22		27,863.39
HOLT, JUDY & LARRY	50,000.00	13,070.22	20,000.00	1,900.13	(1,800.00)	83,170.35
HONERKAMP, BETTYE PYLANT - NURSING	18,822.72	1,806.57	200.00	565.26	(334.00)	21,060.56
ISENSEE, MYRTLE GEBERT	105,094.74	9,207.82		3,122.87	(3,487.00)	113,938.43
JANNER, EUGENE	21,549.62	2,639.21		654.49	(1,069.00)	23,774.32
JASTER-KRAUSE TRUST	71,164.83	6,714.57		2,108.58	(3,120.00)	76,867.99
JONES & CARTER, INC.-PLEDGER KALKOMEY, INC. ENGINEERING	15,000.00	1,337.54	10,000.00	486.35	(659.00)	26,164.89
KENJURA, ATWOOD	15,130.00	2,226.70		460.91	(767.00)	17,050.61
KNAPP, ERICH - MUSIC	15,000.00	1,341.20		435.71	(659.00)	16,117.91
KNOX, BENJAMIN		112.51	28,802.13	112.51		28,914.64
KOLWES, ALICE	1,917,080.85	158,310.30		56,330.13	(81,109.00)	2,050,612.28
KOLWES, ALICE - TECHNICAL	300,000.00	48,938.47		9,694.86		358,633.32
KRIZAN, DR. A.C. "BUDDY" AND JUDY	17,650.00	1,377.01	1,100.00	532.95		20,659.96
KROLCZYK, STEVEN	23,422.22	3,899.95	200.00	747.56	(1,000.00)	27,269.73
KRUSE, BERTHA QUEBE	117,500.00	8,005.86		3,402.85	(5,268.00)	123,640.71
KRUSE, E.F. - BLUE BELL CREAMERIES	54,000.00	4,814.68		1,591.39	(2,600.00)	57,806.07
KRUSE, ED AND EVELYN	50,000.00	10,075.55	100.00	1,648.72	(2,002.00)	59,822.27
KRUSE, ED F.	60,025.00	4,699.07		1,766.97	(2,912.00)	63,579.04
KRUSE, HOWARD W.	16,887.89	2,728.41		522.47	(876.00)	19,262.78
KUBIAK, REP. DAN	10,180.00	1,255.52		304.73	(505.00)	11,235.26
LACINA AND FAMILY, L. J. AND NORMA	118,696.00	7,949.70		3,433.84	(4,742.00)	125,337.55
LAMPE, WADENE	20,000.00	1,976.64		596.95	(886.00)	21,687.59
LANE, DR. MARILYN R.	15,500.00	2,179.46		470.31	(781.00)	17,368.77
LANGE, NORWOOD AND BARBARA	15,793.44	1,832.09	500.00	499.74	(761.00)	17,864.27
LAROCHE, RUTH DALLMEYER	15,075.00	1,289.36		444.26	(723.00)	16,085.62
LAUTER, NEVILLE DIETRICH	15,000.00	1,283.89		441.65	(656.00)	16,069.54
LEHRMANN, OTTO	20,000.00	1,959.31		595.14	(962.00)	21,592.45
LEHRMANN, OTTO Q.	22,000.00	902.65		623.02	(517.00)	23,008.68
LETTERMAN	15,000.00	(1,139.50)		351.08	(2,070.00)	12,141.59
LEVIEEN, ALFRED CLASS OF 1906	20,145.00	991.20		576.68	(643.00)	21,069.87
LIONS CLUB DISTRICT 2-S5	15,119.26	1,339.15		457.27		16,915.68
LOCKETT, REESE B.	37,500.00	2,769.97	2,000.00	1,133.01	(1,788.00)	41,614.98
LONE STAR SCHOLARSHIP	31,887.90	2,818.45		945.03	(1,405.00)	34,246.38
LOOK - LYON	15,000.00	1,155.62		445.24	(714.00)	15,886.85
LOOK-ENGEL, ALETHA	15,000.00	1,433.66		437.17	(726.00)	16,144.82

BLINN COLLEGE FOUNDATION SCHOLARSHIPS AND ENDOWMENTS  
As of March 31, 2023

DESCRIPTION	CORPUS	Accum Earning September 1, 2022	Donations	Interest Earned YTD	Scholarships Awarded	Book Balance March 31, 2023
LOVETT, KENNETH	15,000.00	1,161.18		433.47	(714.00)	15,880.64
LUECKEMEYER, ODELL AND WILLIE MAE - WORKFORCE I	25,000.00	4,832.39		828.86		30,661.25
LUECKEMEYER, ODELL AND WILLIE MAE - WORKFORCE II	25,000.00	6,203.34		866.95		32,070.29
MACHAT, TRACY AND JOSEPH, JR. ATHLETIC	21,170.85	1,364.58		613.07	(908.00)	22,240.50
MARSHALL II, OWEN	20,939.97	2,417.07		644.00	(976.00)	23,025.04
MARTIN, CLYDE	22,242.22	2,184.25		661.93	(1,085.00)	24,003.40
MASSEY, CAROLYN	13,261.75	1,173.59		385.50	(582.00)	14,238.84
MAY, JON DEE	15,000.00	1,442.83		454.01	(727.00)	16,169.84
MCHAM, HAYLEY	31,739.68	6,032.78	537.20	1,052.47		39,362.13
MILLER, DOTTIE	15,250.00	1,526.88		454.26	(745.00)	16,486.14
MOELLER, WALDO - ACADEMIC I	15,000.00	1,308.02		442.32	(657.00)	16,093.34
MOELLER, WALDO - ACADEMIC II	15,000.00	1,306.83		434.81	(657.00)	16,084.64
MOELLER, WALDO - ACADEMIC III	28,610.00	3,018.51		857.80	(1,275.00)	31,211.31
MOELLER, WALDO - WORKFORCE I	20,000.00	3,511.13		653.22		24,164.35
MOELLER, WALDO - WORKFORCE II	20,000.00	4,151.54		671.02		24,822.56
MOORE FAMILY, H. L. P.	32,500.00	2,143.10		941.15	(1,289.00)	34,295.25
MORRIS, THOMAS AND RACHEL BRADHAM SPENCER	18,765.00	1,463.28	1,000.00	562.82	(447.00)	21,344.11
MORROW, CLARENCE & ETTIE RICHBURG	20,000.00	3,320.74		636.79	(1,036.00)	22,921.53
MUNKE ESTATE, LEE C.	51,159.25	4,140.71		1,501.93	(1,833.00)	54,968.89
MUSKE, RONALD LEE	3,000.00	247.63		86.30	(150.00)	3,183.93
MUTSCHER, GUS & GERTIE	18,866.28	1,952.52		564.27	(920.00)	20,463.07
MUTSCHER, GUS STAR OF THE REPUBLIC			25,000.00	97.66		25,097.66
MUTSCHER, KENNETH AGRICULTURE	41,004.20	2,356.26		1,175.99	(1,748.00)	42,788.45
NEWMYER, STEVEN K. LEADERSHIP	20,000.00	1,117.38		572.73	(851.00)	20,839.11
NOACK, STEVEN AND RUTH	25,000.00	2,857.66		771.08	(572.00)	28,056.74
OELFKE, RALPH AND DAYE H.	194,019.71	18,043.78		5,739.17	(9,423.00)	208,379.66
O'MALLEY, RICHARD J. AND MARCENA	18,550.00	1,896.91		553.23	(904.00)	20,096.15
ORDER OF THE EASTERN STAR I	15,000.00	1,823.56		455.61	(500.00)	16,779.16
ORDER OF THE EASTERN STAR II	15,000.00	1,823.56		458.36	(339.00)	16,942.91
ORDER OF THE EASTERN STAR III	15,000.00	1,823.56		467.43		17,290.98
O'SHEA, WILLIAM	8,097.14	764.17		246.20		9,107.51
PATRIAS, FIESTAS	20,000.00	5,465.05		707.52		26,172.57
PEARSON, DR. BARBARA	12,880.64	1,120.90		374.51	(564.00)	13,812.05
PICONE, JOE AL & MERLE	16,245.00	1,519.22		483.77	(397.00)	17,850.99
PIERATT, LAURA LEE WILSON	15,000.00	3,324.25		509.11		18,833.36
PIERATT, W. H. "BILL"	15,000.00	3,456.34		512.79		18,969.13
PLEDGER, MAISIE LOUELLEN	15,575.00	1,277.06		448.29	(745.00)	16,555.35
PLUMMER, BETTY CANTRELL	15,790.00	1,289.22		474.52		17,553.73
POHLMAYER, SARAH BETH	635,868.22	71,784.37		19,205.10	(30,301.00)	696,556.69
POWELL, BARBARA & RICHARD	25,871.09	1,666.86		745.00	(1,224.00)	27,058.95
PRENZLER, GLENWOOD AND SHIRLEY	15,000.00	1,288.45		436.13	(1,000.00)	15,724.58
QUADE, LILLIAN L. AND WILLIAM H. "DOC"	21,170.86	2,208.65		645.89	(942.00)	23,083.40
RAMPIERE, AL & ELIZABETH	23,000.00	2,094.24		678.98	(1,109.00)	24,664.23
RANKIN, MARY STONE	17,068.77	1,355.59		500.60	(407.00)	18,517.96
RANKIN, VAN DYKE	11,000.00	1,158.88		326.12	(537.00)	11,948.00
RATCLIFF, MARTHA JANE PAT	31,520.00	4,229.49		985.24	(1,580.00)	35,154.73
REASONER, HARRY M. AND MACEY HODGES	16,750.00	1,483.18		491.15	(600.00)	18,124.33
REESE, HOFFMANN AND KATHERINE	15,035.00	1,240.09		442.19	(360.00)	16,357.29
REMMERT, SYDNEY DELL JOHNSTON	2,389,345.13	269,657.71		72,345.90	(106,880.00)	2,624,468.74
RODGERS, DOUG AND TRISH	209,411.33	13,969.70	2,236.75	6,060.56	(9,948.00)	221,730.34
RODRIGUEZ, PETE	15,000.00	3,760.03		521.22		19,281.25
SCHAEFER, ROBERT AND EMILIE	25,136.75	2,720.56		758.39	(561.00)	28,054.70
SCHMID, SANFORD	65,000.00	9,783.58		2,077.78		76,861.36
SCHMIDT, JANETTE AND RUBEN	66,089.14	5,780.02		1,956.54	(1,449.00)	72,376.70
SCHOENVOGEL AND FAMILY, Dr. C. W.	110,470.00	13,569.81		3,446.29		127,486.10
SCHOENVOGEL FAMILY I	20,000.10	1,311.75	4,894.00	694.11	(445.00)	26,454.96
SCHOENVOGEL FAMILY II	370,060.01	20,674.81		10,816.15	(7,875.00)	393,675.97
SCHOENVOGEL JR., C., WALTER "WALT"	40,000.00	4,902.70		1,238.38	(1,810.00)	44,331.08
SCHOENVOGEL, A. MELTON	40,000.00	3,629.73		1,207.57	(913.00)	43,924.31
SCHOENVOGEL, CHAIRMAN WALT	148,728.56	18,293.17		4,635.52	(981.00)	170,676.25
SCHOENVOGEL, DR. AND MRS. CLARENCE	43,000.00	5,357.75		1,333.67	(1,949.00)	47,742.41
SCHOENVOGEL, DR. C.W.	40,000.00	3,659.27		1,208.38	(913.00)	43,954.65
SCHOENVOGEL, DR. CLARENCE	40,000.00	4,096.04		1,220.57	(905.00)	44,411.61
SCHOMBURG JR., DENNIS W.	15,290.00	1,626.15		470.00		17,386.15
SCHOMBURG, DORIS	15,000.00	2,750.11		493.17		18,243.28
SCHOMBURG, MELVIN AND MARY	15,000.00	1,307.60		437.39	(721.00)	16,023.99
SCHROEDER, ALLAN R.	19,023.69	2,367.36		578.67	(951.00)	21,018.73
SCHROEDER, DON AND DEBBIE	20,000.00	1,755.81		592.97	(447.00)	21,901.78
SCHROEDER, IRENE & GLIFFARD	343,175.00	31,579.97		10,171.94	(15,317.00)	369,609.91
SCHROEDER, RUDOLPH AND LATHEL	25,070.00	2,231.66		739.95	(1,207.00)	26,834.61
SCHULTE, ZANE	15,020.00	1,239.08		439.88	(722.00)	15,976.97
SCHWARTZ 50th ANNIVERSARY		12,537.97		334.10	(554.00)	12,318.07
SCHWARTZ, ANNIE BELLE BT		14,062.50		380.24	(795.00)	13,647.74
SCHWARTZ, ANNIE BELLE F	20,561.00	3,464.50		667.51		24,693.01
SCHWARTZ, CHARLES W.		11,269.25		299.28	(498.00)	11,070.53
SCHWARTZ, KAY	15,000.00	92.64	100.00	422.11		15,614.75
SCHWARTZ, WALTER		24,850.62		684.88	(1,098.00)	24,437.50
SCHWARTZ, WALTER C.		22,127.63		601.54	(988.00)	21,741.16
SEELHORST, ERNEST H - EDUCATION	45,588.48	3,145.33		1,318.52	(2,161.00)	47,891.33
SHARP, JOHN AND CHARLOTTE	33,212.17	2,885.64		983.39	(1,455.00)	35,626.20

BLINN COLLEGE FOUNDATION SCHOLARSHIPS AND ENDOWMENTS  
As of March 31, 2023

DESCRIPTION	CORPUS	Accum Earning September 1, 2022	Donations	Interest Earned YTD	Scholarships Awarded	Book Balance March 31, 2023
SHARP, OZELL	20,030.00	2,554.03		625.08	(471.00)	22,738.11
SHEPPEARD, LUCILLE CLICK	13,820.00	1,159.58		412.83	(662.00)	14,730.41
SMITH, EVELYN MARIE WILSON	15,765.00	4,431.29		536.33	(893.00)	19,839.62
SNEED, JANIS	13,413.87	1,317.55		398.59	(651.00)	14,479.01
SOCIAL SCIENCE	90,955.37	6,638.46		2,644.74	(3,609.00)	96,629.56
SPEIR, GREGORY	17,025.00	1,536.00		511.53	(820.00)	18,252.53
STARK, DELBERT	25,000.00	2,026.87		731.89	(1,195.00)	26,563.76
STERN, LONNIE HENRY	35,000.00	3,046.07		1,032.21	(1,562.00)	37,516.28
STOLTENBERG, PAULA K.	20,642.00	3,377.39		665.28	(531.00)	24,153.67
STOLZ, LAVERNA - MUSIC FOUNDATION	22,500.00	2,444.78		693.06		25,637.84
STOLZ, R. W.	20,000.00	2,121.98		599.55	(980.00)	21,741.53
STONE, CHASE VET TECH	15,868.13	100.72	2,023.82	460.72		18,453.39
STRANGE, ROBERT F.	10,000.00	864.25		295.69	(240.00)	10,919.94
STRICKLAND, DONALD L AND JO	15,000.00	952.84		433.33	(643.00)	15,743.18
STYLECRAFT	30,000.00	1,759.58		861.38	(1,280.00)	31,340.97
THIELEMANN, ALBERT AGRICULTURE	15,000.00	638.54	992.12	441.14	(315.00)	16,756.81
THIELEMANN, ALBERT ENGINEERING	15,000.00	647.16	992.12	427.02	(631.00)	16,435.30
THIELEMANN, MARGARET M.	15,098.44	1,340.91	992.12	463.93	(675.00)	17,220.40
THIENES, NINA DUKES NURSING	33,000.00	1,769.59		961.30	(934.00)	34,796.89
THIENES, WILLIAM ENGINEERING	20,000.00	7.59		555.87		20,563.46
THOMAS, EMIL AND ELAINE	37,622.54	2,442.66	1,743.24	1,099.41	(1,621.00)	41,286.85
TIEMANN, ELTON	23,000.00	33,528.83		1,532.20	(2,070.00)	55,991.04
TIEMANN, LINDA	21,000.00	1,937.05		623.99	(925.00)	22,636.04
TIEMANN, RONNA & LON	20,000.00	1,754.25		590.85	(881.00)	21,464.10
TOMACHEFSKY, BERNITA	10,015.00	917.36		290.34	(483.00)	10,739.70
TOMACHEFSKY, ODIS	16,000.00	1,502.90		464.80	(774.00)	17,193.70
TOMULINSON, EDYNA KUEHN	15,501.00	1,433.54		449.62	(752.00)	16,632.16
TOTTENHAM, RUTH ELIZABETH	14,065.00	1,286.26		424.72	(354.00)	15,421.99
TOUBIN, MILTON	15,000.00	2,164.44		474.93	(500.00)	17,139.37
TOUBIN, SAM AND ROSA	25,025.00	3,056.57		780.22		28,861.80
TWIGGS, KEITH & ELIZABETH	20,000.00	2,740.45		623.81	(1,789.00)	21,575.26
TWIGGS, KEITH & ELIZABETH II	20,000.00	1,491.86		597.12		22,088.97
TYSON ENGINEERING	25,545.00	2,038.51		760.62	(1,132.00)	27,212.14
VANDERWERTH, ELLIE	20,000.00	1,728.50		579.37	(876.00)	21,431.87
VANDERWERTH, ELLIE ADELIA CARTER	20,000.00	1,274.70		568.13	(858.00)	20,984.83
VANDERWERTH, THEODORE	20,000.00	2,567.34		612.05	(910.00)	22,269.40
VINSON & ELKINS L.L.P.	15,000.00	1,526.73		455.47	(730.00)	16,252.19
VOELTER, DR. DONALD	16,002.00	1,370.62		471.41	(708.00)	17,136.03
WAGNER, OLIVER - MASONIC LODGE	20,000.00	1,759.36		590.09	(881.00)	21,468.45
WAHRMUND, LARRY	24,452.23	1,684.06		711.06	(1,053.00)	25,794.35
WALKER, DR. BRENDA SPEIGHTS HITS	14,610.04	1,522.90		448.23		16,581.18
WARREN MASONIC LODGE I	21,640.00	4,333.48		717.85	(750.00)	25,941.33
WARREN MASONIC LODGE II	21,640.00	4,113.94		711.74	(750.00)	25,715.69
WARREN MASONIC LODGE III	21,640.00	3,119.11		663.25	(1,500.00)	23,922.36
WASHINGTON COUNTY ABSTRACT	15,000.00	967.68		426.40	(644.00)	15,750.09
WASHINGTON COUNTY GO TEXAN- MILTON GASKAMP	15,260.27	3,070.77		509.31		18,840.34
WASHINGTON COUNTY GO-TEXAN	17,260.28	3,314.55		571.65		21,146.48
WASHINGTON COUNTY GO-TEXAN II (06/17/08)	15,000.00	4,139.61		531.77		19,671.38
WATZLAVICK, LEONA MAZUCH - NURSING	16,145.00	1,533.36		489.09	(408.00)	17,759.45
WEHRING, DOROTHY KUNRAD	55,000.00	4,801.67		1,638.09	(2,410.00)	59,029.77
WELLS FARGO	20,000.00	1,734.97		579.55	(876.00)	21,438.51
WHEELER, F. W. BERT AND MAE DEAN	20,000.00	2,469.26		570.90	(11,990.83)	11,049.32
WHEELER, F.W. BERT AND MAE DEAN - NURSING I	276,000.00	29,783.99		8,470.67	(906.00)	313,348.66
WHEELER, F. W. BERT AND MAE DEAN NURSING II	603,488.50	61,764.12		18,374.36	(23,405.64)	660,221.34
WHIGHAM, LARRY & MARY	22,525.00	3,037.78		710.23		26,273.02
WHIGHAM, TIMOTHY RAY	22,720.00	11,727.48		957.10		35,404.58
WHITEHEAD, TOM S. AND EDYTHE	18,349.59	1,510.34		537.20	(887.00)	19,510.13
WIESE WOODS SMITH	25,000.00	1,735.84		726.22	(1,078.00)	26,384.06
WILDER FAMILY	10,050.00	996.95		293.05	(499.00)	10,841.00
WILHELM, DON AND MARY	20,147.14	1,767.70		594.36	(883.00)	21,626.20
WILKES IV, ORAN	15,333.33	1,260.75		454.48	(278.00)	16,770.56
WINKELMANN FAMILY, NATHAN AND DARLA	15,000.00	1,564.87		460.23		17,025.10
WINKELMANN WHITMORE, JEAN	65,855.00	(4,587.78)		1,658.05	(2,732.00)	60,193.27
WINKELMANN, F. C. AND FLOY	84,000.00	5,760.71		2,432.53	(3,989.00)	88,204.24
WINKELMANN, SAM AND HELEN KING	628,413.95	75,775.72		19,158.63	(20,378.00)	702,970.29
WINKLER, PHILLIPS SHARPE	36,848.61	3,753.39		1,098.52	(1,799.00)	39,901.51
WOODSON LUMBER CO. - TECHNICAL EDUCATION	20,000.00	1,790.38		591.00	(878.00)	21,503.38
YAGER FOUNDATION	20,000.00	1,800.80		591.06	(891.00)	21,500.86
YORK SR., MILTON GARRETT	22,500.00	1,826.28		658.21	(1,075.00)	23,909.49
YORK, MEREDITH GARRETT	22,500.00	1,726.41		658.97	(1,071.00)	23,814.38
YORK, MIRIAM	22,500.00	1,970.54		666.24	(553.00)	24,583.78
YORK, MIRIAM - NURSING	25,000.00	1,999.03		746.97	(623.00)	27,123.00
ZIEGENBEIN, MELVIN AND GLADYS	15,000.00	1,670.57		451.29	(745.00)	16,376.85
	20,333,779.10	2,738,292.19	442,929.70	639,972.88	(640,076.77)	23,514,897.10

Unrealized Gain(Loss)

Total Market Value as of 03/31/2023

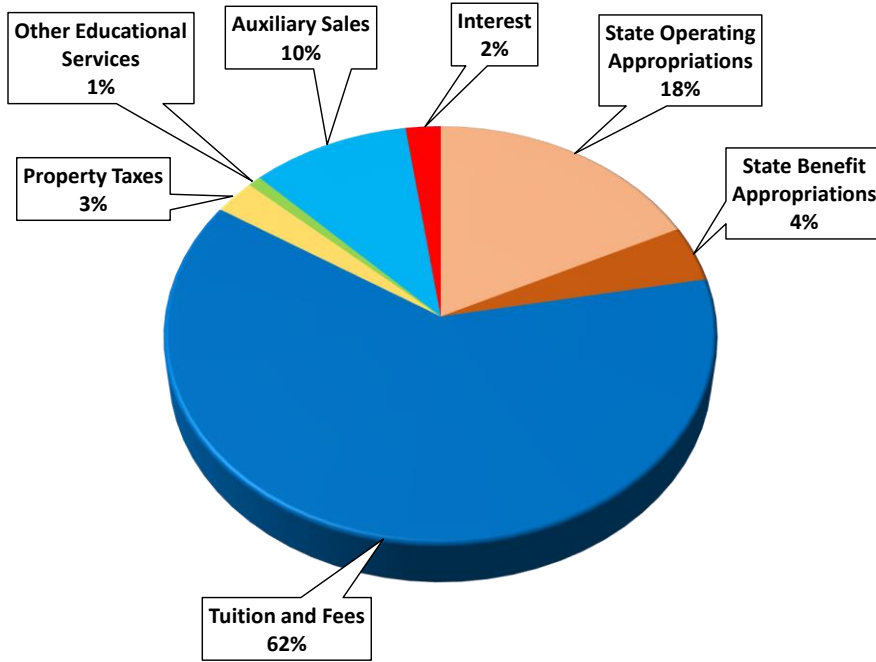
3,035,088.31

26,549,985.41

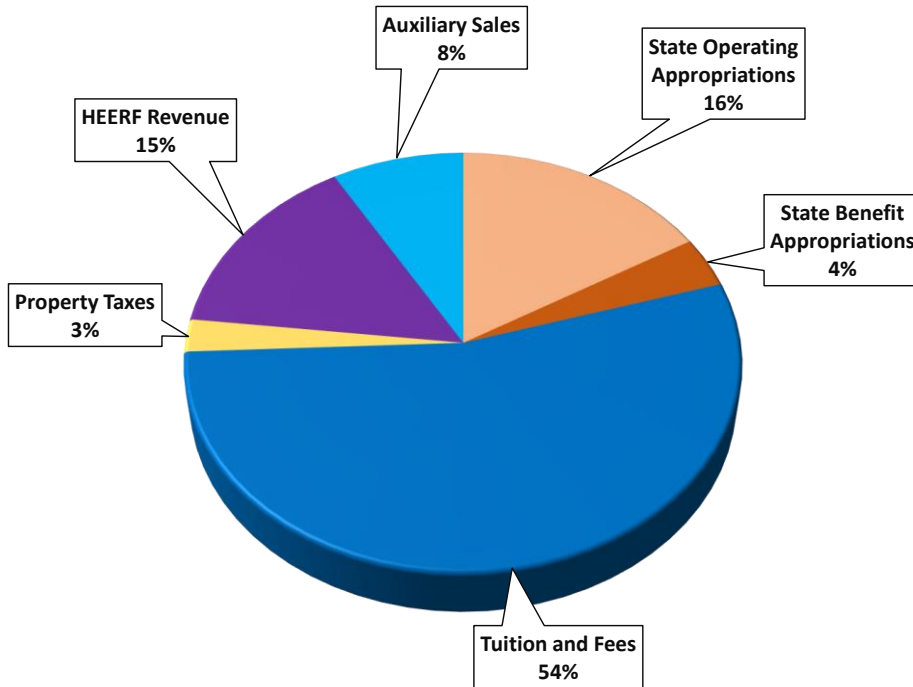
BLINN COLLEGE DISTRICT  
Check Register  
Checks Issued Between: 03/01/2023 - 03/31/2023 (Over \$10,000)

Check Number	Vendor Name	Date of Check	Amount	Description	Category
!0017139	AHI Facility Services Inc	3/7/2023	\$63,106.62	Monthly custodial services	Operations
!0017176	AHI Facility Services Inc	3/9/2023	\$94,928.27	Monthly custodial services	Operations
!0017366	AHI Facility Services Inc	3/30/2023	\$155,864.09	Monthly custodial services	Operations
!0017274	Avinext	3/23/2023	\$111,306.00	IT equipment	Operations
!0017142	Barnes & Noble College Booksellers Inc	3/7/2023	\$409,063.59	Books	Operations
!0017180	Barnes & Noble College Booksellers Inc	3/9/2023	\$16,405.72	Books	Operations
!0017143	Ben E Keith Co	3/7/2023	\$14,945.92	Food & food supplies	Operations
!0017315	BSN Sports Inc	3/28/2023	\$13,827.00	Uniforms	Operations
D0004362	BTU	3/15/2023	\$38,968.32	Utilities	Operations
10033378	Campus Optics Inc	3/28/2023	\$12,600.00	Service fee 05/05/2023-05/04/2024	Operations
!0017147	CDW Government Inc	3/7/2023	\$11,096.07	IT equipment	Operations
!0017185	CDW Government Inc	3/9/2023	\$25,899.00	IT equipment	Operations
!0017280	CDW Government Inc	3/23/2023	\$20,719.20	IT equipment	Operations
!0017317	CDW Government Inc	3/28/2023	\$18,776.52	IT equipment	Operations
D0004345	City of Brenham	3/2/2023	\$57,905.42	Utilities	Operations
D0004370	City of Brenham	3/16/2023	\$56,138.41	Utilities	Operations
!0017186	Centre Technologies	3/9/2023	\$14,245.00	IT equipment	Operations
!0017248	Ellucian Company L P	3/21/2023	\$11,700.00	IT services	Operations
!0017249	Elsevier Inc	3/21/2023	\$25,632.02	Nursing program packages	Operations
!0017322	Elsevier Inc	3/28/2023	\$24,918.15	Nursing program packages	Operations
!0017151	Green Teams Inc	3/7/2023	\$13,962.00	Monthly landscaping	Operations
!0017195	GT Distributors Inc	3/9/2023	\$28,018.42	Police dept equipment	Operations
10033267	Optimum	3/9/2023	\$15,433.95	Cable services	Operations
10033272	Polaris Fun Center	3/9/2023	\$15,571.12	2023 Polaris Ranger	Operations
!0017161	Scarmardo	3/7/2023	\$17,619.33	Food & food supplies	Operations
!0017290	Scarmardo	3/23/2023	\$11,763.67	Food & food supplies	Operations
!0017335	Schneider Electric Buildings Americas Inc	3/28/2023	\$22,050.00	Monthly service agreement	Operations
10033277	Specialty Rescue & Fire	3/9/2023	\$20,000.00	Training	Operations
10033397	Supertech Inc	3/28/2023	\$33,625.00	Full body human skeleton for nursing	Operations
!0017293	TEEX	3/23/2023	\$48,920.00	Fire Academy & investigation skills program	Operations
!0017337	TEEX	3/28/2023	\$111,970.00	Assembly tester & Police academy	Operations
!0017110	Tejas Center LTD	3/2/2023	\$15,605.14	Monthly lease	Operations
10033285	Texas A&M University-Financial Management	3/9/2023	\$15,976.56	RELLIS utilities	Operations
10033289	Texas Energy & Automation Management Solutions Inc	3/9/2023	\$11,732.00	Support agreement March 2023-August 2023	Operations
!0017295	Thompson & Horton LLP	3/23/2023	\$11,980.75	Legal services	Operations
!0017212	Weaver and Tidwell LLP	3/9/2023	\$17,380.00	Auditing services	Operations
!0017167	Wex Bank	3/7/2023	\$10,355.35	Monthly gas charges	Operations
10033302	Yellowstone Landscape	3/9/2023	\$22,142.18	Monthly landscaping	Operations
!0017312	Aggieland Construction	3/28/2023	\$94,072.91	Library painting on Bryan campus & interior access controls	R&R Construction
!0017099	Bartlett Cocke General Contractors LLC	3/2/2023	\$248,426.00	RELLIS Phase II	R&R Construction
!0017247	Choice Consulting LLC	3/21/2023	\$22,600.00	Asbestos abatement & monitoring	R&R Construction
!0017281	Choice Consulting LLC	3/23/2023	\$11,675.00	Asbestos abatement & monitoring	R&R Construction
!0017321	Elliott Electric Supply Inc	3/28/2023	\$60,529.84	Parking lot pole replacement on Bryan Campus	R&R Construction
!0017192	FieldTurf USA, Inc.	3/9/2023	\$72,042.00	Services for Dreyer Field	R&R Construction
!0017328	Kirksey Architecture	3/28/2023	\$186,000.00	Services for Bryan Admin Building	R&R Construction
10033327	Millennium Project Solutions, Inc.	3/21/2023	\$79,131.66	Seat renovation at Dreyer Field	R&R Construction
!0017333	Rx Technology	3/28/2023	\$12,456.00	Wireless access points for Old Main Renovations	R&R Construction
10033338	Scott Equipment, LLC	3/21/2023	\$17,905.48	Washer & dryer installation at Dreyer Field	R&R Construction
!0017205	Sitek Omni Services, LLC	3/9/2023	\$58,800.00	Spencer Hall abatement services	R&R Construction
10033231	Solid Bridge Construction	3/7/2023	\$24,700.00	Higgins Branch erosion control	R&R Construction
!0017338	Tempset Controls Inc	3/28/2023	\$30,400.00	BAS system upgrades on Schulenburg Campus	R&R Construction

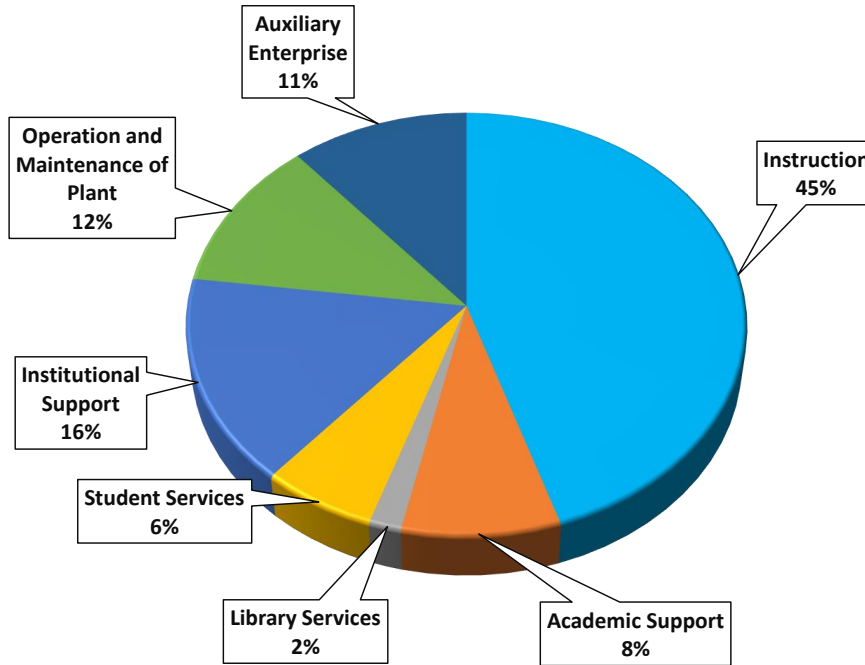
Fiscal Year 2023



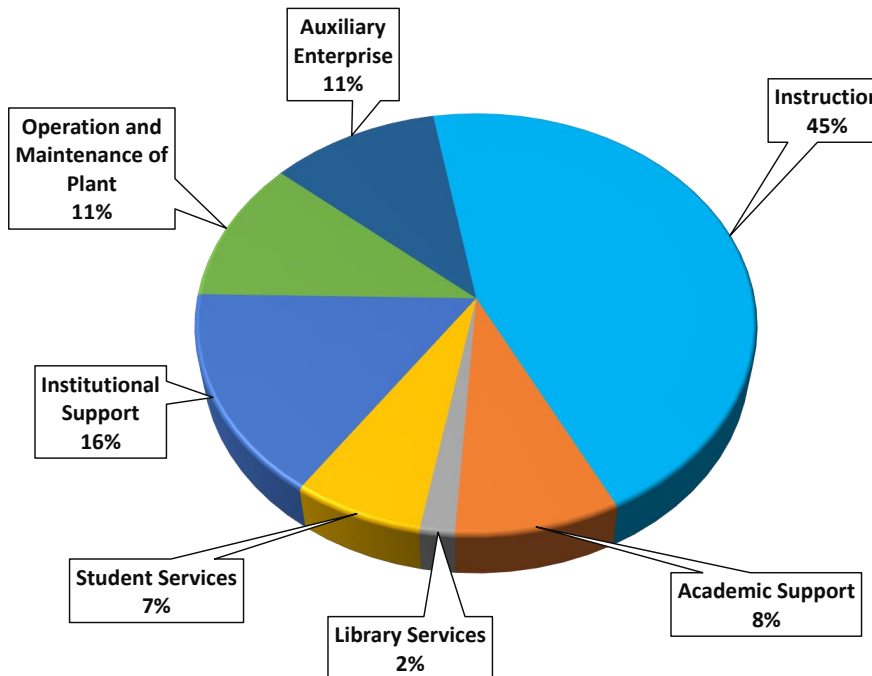
Fiscal Year 2022



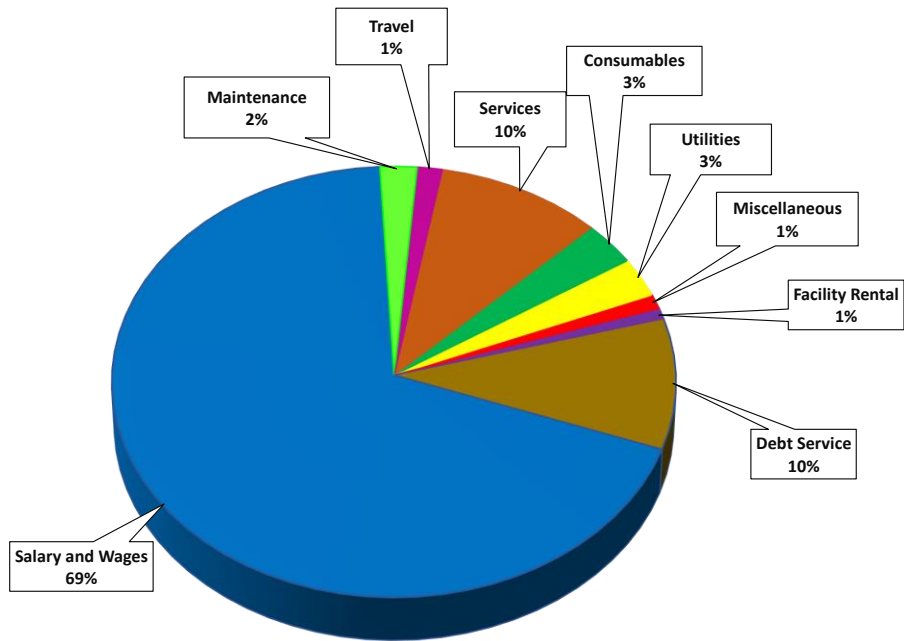
Fiscal Year 2023



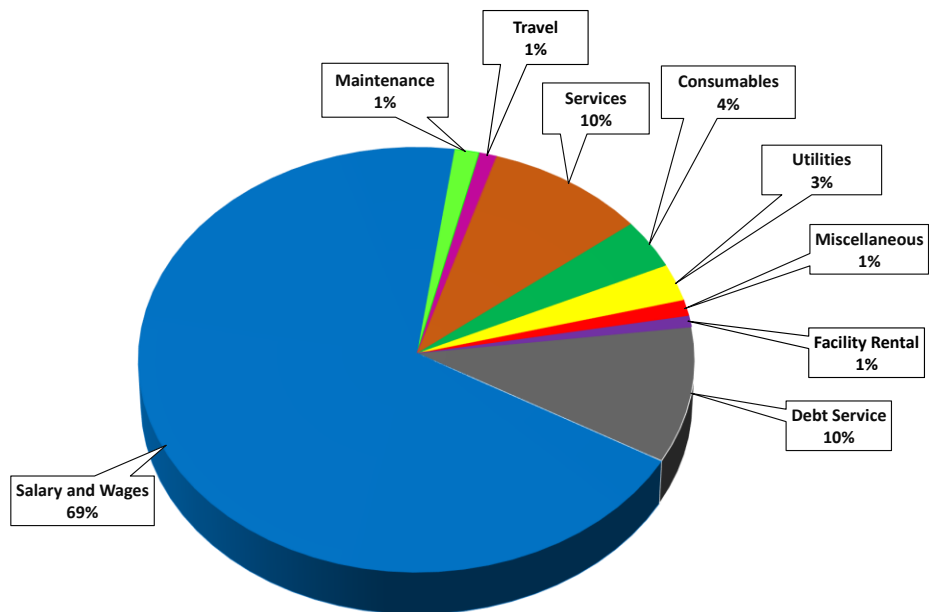
Fiscal Year 2022



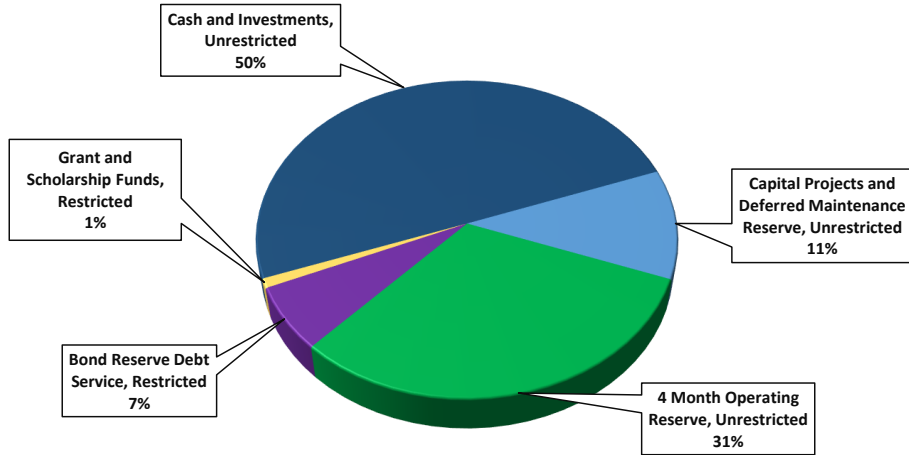
Fiscal Year 2023



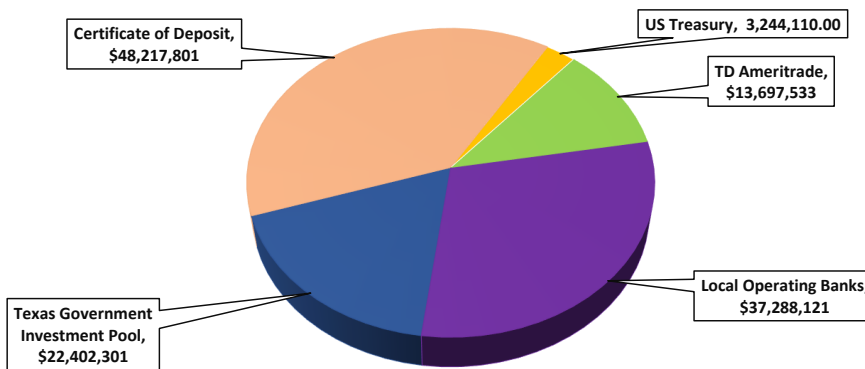
Fiscal Year 2022



**Allocation of  
 Total Cash and Investments**



**Composition of  
 Unrestricted Cash and Investments**



**Composition of  
 Restricted Cash and Investments**

